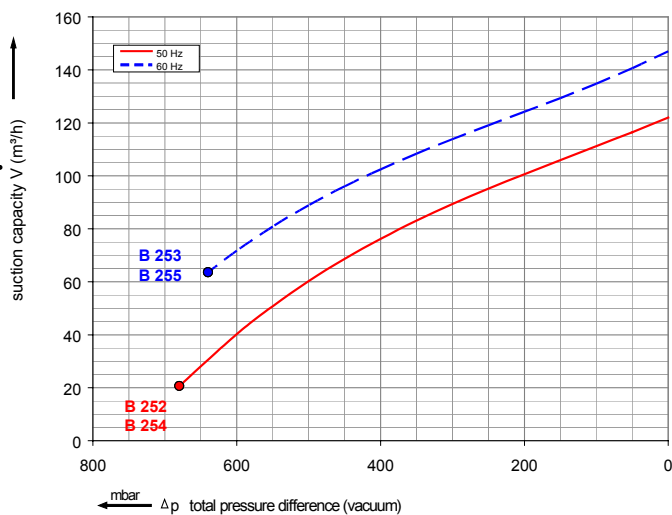


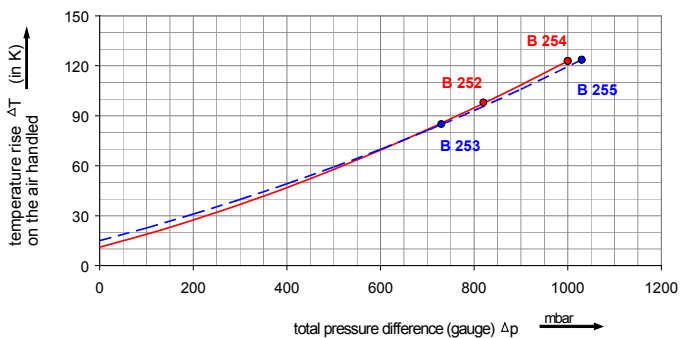
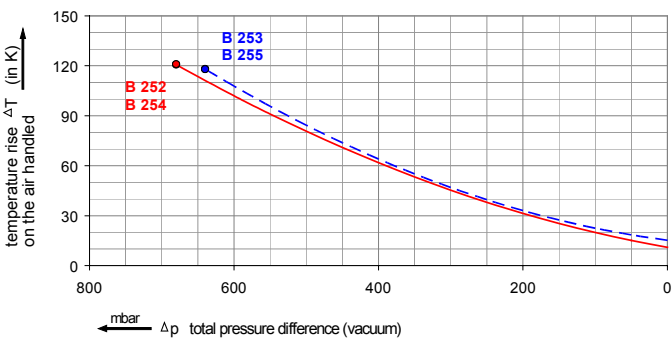
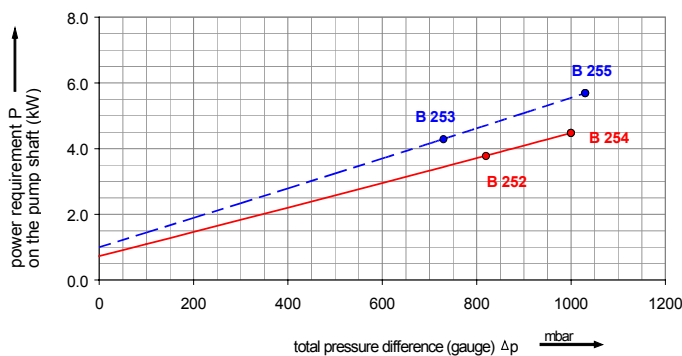
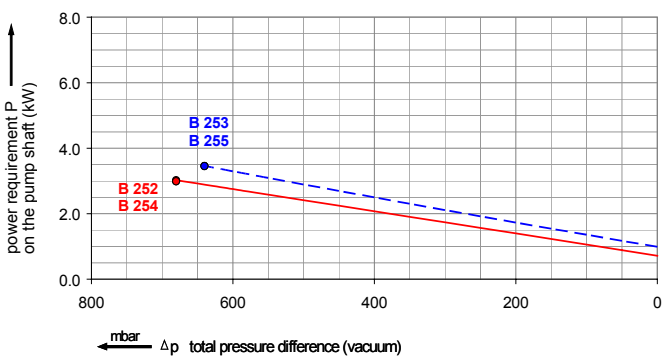
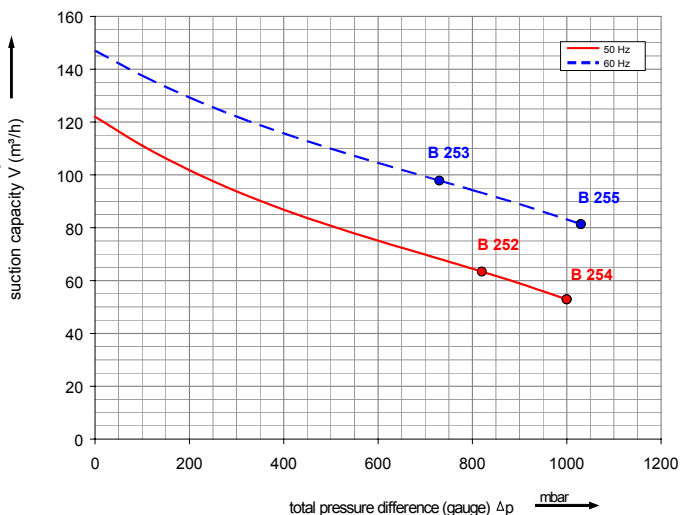


Data sheet 4HB 530

Performance curve for Vacuum pump



Performance curve for Compressor



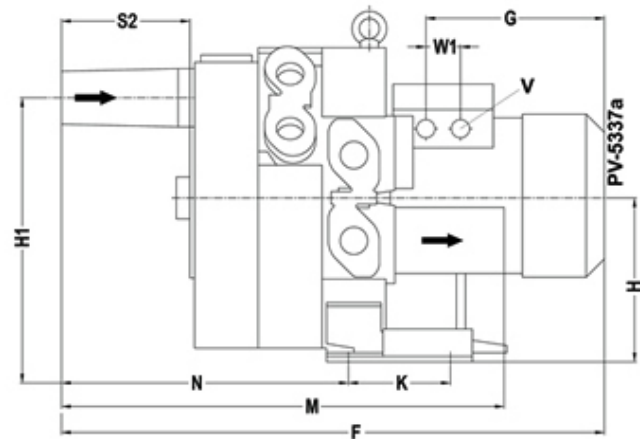
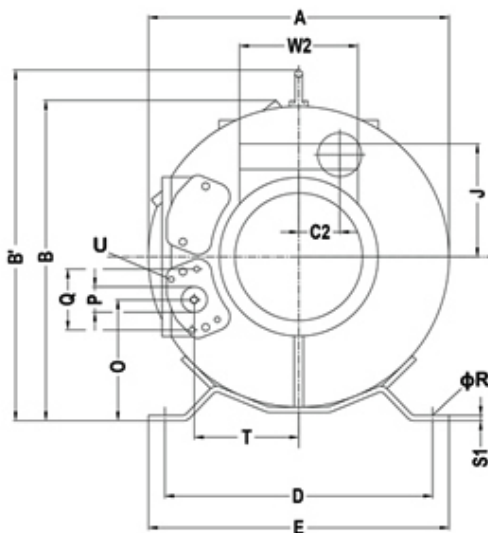
The performance curves are based on air at a temperature of 15 °C and an atmospheric pressure of 1013 mbar with a tolerance of +/- 10 %. The total pressure differences are valid for suction and ambient temperatures up to 25 °C. For other conditions please confer with us.

Each 4HB type can be applied both as vacuum pump and compressor in continuous operation over the total stated performance curve range. The motors are available as standard for the input voltage range of 50 and 60 Hz and for protection category IP 55 as well as approved for UL and CSA.



Data sheet 4HB 530

Selection and ordering data										
Type 4HB 530										
Curve No.	Order No.	Fre- quency Hz	Rated power kW	Input voltage V	Input current A	Permissible total differential pressure ²⁾		Sound pressure level ³⁾ dB(A)	Weight ca. kg	
						Vacuum mbar	Compressor mbar			
3~ 50/60 Hz IP55 isulation material class F)										
B 252	4HB 530-400T	50	4.0	345D ... 415D		9.5D	-680	820	67	62
B 253		60	4.6	380D ... 480D		9.5D	-640	730	73	62
B 254	4HB 530-550T	50	5.5	345D ... 415D		11.5D	-680	1000	67	68
B 255		60	6.3	380D ... 480D		12.0D	-640	1030	73	68



A	B	C''	D	E	F			
442	402	63	371	406	717			
G	H	H'	J	K	M	N		
274	236	389	148	152	539	336		
O	P	Q	ΦR	S1	S2	T	U	
172	G 1 ¼	64	14	5	146	153	M6×17	
V	W1	W2						
M32×1.5	42	120						

All 4-HB achieve the standards and norms of the low voltage directive (LVD)2006/95/EC, rotating electrotechnical motor EN 60034-1-2004, electromagnetic compatibility(EMC)EN55014-1/2,EN61000-2/-3/-4/-6.

- 1) For standard UL for ELECTRIC MOTOR UL 1004-1.
- 2) Relief-valve are available for limiting differential pressure.
- 3) Measuring-surface sound-pressure level acc. to DIN EN 21680, measured at a distance of 1 m. The pump is throttled to an average suction pressure, a hose is connected to the discharge side (compressor) / suction side (vacuum pump), but is not fitted with relief valves.

The motors are designed according to the DIN EN 60 034 / DIN IEC 34-1 and temperature class F.
 For the three phase machines the tolerances are +/- 10 % for fixed voltage and +/- 5 % for voltage range.
 The single phase machines are designed with a +/- 5 % tolerances. If only 90 % of the maximum allowed pressure will be used for the continuous operating then the allowed voltage range add to +/- 10 %.
 For all single and three phase machines which designed according to the UL and CSA norm (UL 1004-1) the maximum allowed voltage tolerances are - 10 % resp. + 6 %.
 The frequency tolerance is maximum +/- 2 %.