



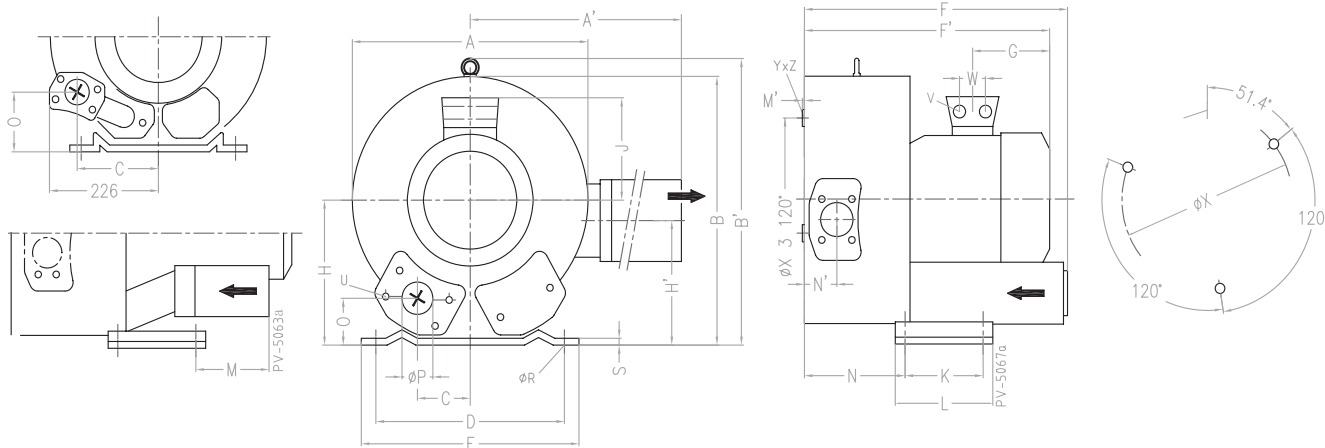
2HB 820

Selection and ordering data

Type 2HB 820

Curve No.	Type	Frequency Hz	Rated power kW	Input voltage V	Input current		Permissible total differential pressure ²⁾		Sound pressure level ³⁾ dB(A)	Weight ca. kg	
					A		Vacuum mbar	Compressor mbar			
3~ 50/60 Hz IP55 insulation material class F 1)											
A 350	2HB 820-550T	50	5.5	345D ... 415D	600Y...720Y	13.3D	7.7	-240	240	74	83
A 351	2HB 820-550T	60	6.3	380D ... 480D	660Y...720Y	13.3D	7.7	-170	160	78	83
A 352	2HB 820-750T	50	7.5	345D ... 415D	600Y...720Y	16.7D	9.6	-400	400	74	86
A 353	2HB 820-750T	60	8.6	380D ... 480D	660Y...720Y	17.3D	10.0	-360	330	78	86
A 354	2HB 820-1100T	50	11.0	345D ... 415D	600Y...720Y	28.0D	16.2	-430	600	74	104
A 355	2HB 820-1100T	60	12.6	380D ... 480D	660Y...720Y	29.0D	16.7	-460	600	78	104
A 356	2HB 820-1500T	50	15.0	345D ... 415D	600Y...720Y	32.5D	18.8	-460	670	74	120
A 357	2HB 820-1500T	60	17.3	380D ... 480D	660Y...720Y	34.5D	19.9	-490	750	78	120

Type	A	B	B'	C	D	E	F	F'	G	H	J	K	L	N	O	ØP	ØR	S	W	V	ØX	YxZ
2HB 820-550T	500	490	509	76	356	394	545	589	226	240	167	170	217	236	65	2½"	15	6	42	4xM32x1,5	286	M12x20
2HB 820-750T	500	490	509	76	356	394	545	589	226	240	167	170	217	236	65	2½"	15	6	42	4xM32x1,5	286	M12x20
2HB 820-1100T	500	490	509	76	356	394	545	694	318	240	197	170	217	212	105	2½"	15	6	54	4xM40x1,5	286	M12x20
2HB 820-1500T	500	490	509	76	356	394	545	694	318	240	197	170	217	212	105	2½"	15	6	54	4xM40x1,5	286	M12x20



All 2HB achieve the standards and norms of the low voltage directive (LVD)2006/95/EC, rotating electrotechnical motor EN 60034-1-2004, electromagnetic compatibility(EMC)EN55014-1/2,EN61000-2/-3/-4/-6.

- 1) For standard UL for ELECTRIC MOTOR UL 1004-1.
- 2) Relief-valve are available for limiting differential pressure.
- 3) Measuring-surface sound-pressure level acc. to DIN EN 21680, measured at a distance of 1 m. The pump is throttled to an average suction pressure, a hose is connected to the discharge side (compressor) / suction side (vacuum pump), but is not fitted with relief valves.

The motors are designed according to the DIN EN 60 034 / DIN IEC 34-1 and temperature class F.

For the three phase machines the tolerances are +/- 10 % for fixed voltage and +/- 5 % for voltage range.

The single phase machines are designed with a +/- 5 % tolerances. If only 90 % of the maximum allowed pressure will be used for the continuous operating then the allowed voltage range add to +/- 10 %.

For all single and three phase machines which designed according to the UL and CSA norm (UL 1004-1) the maximum allowed voltage tolerances are - 10 % resp. + 6 %.

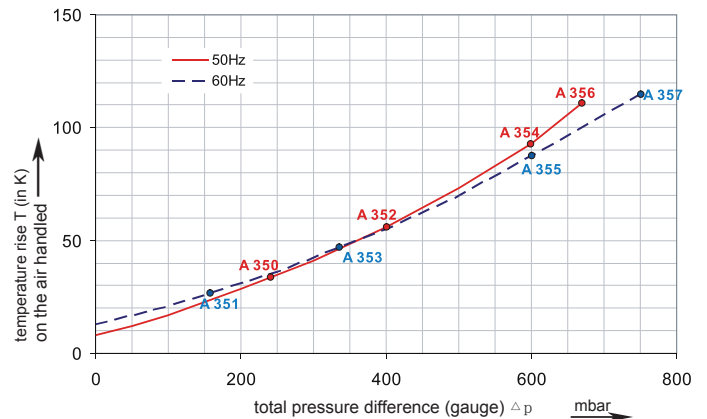
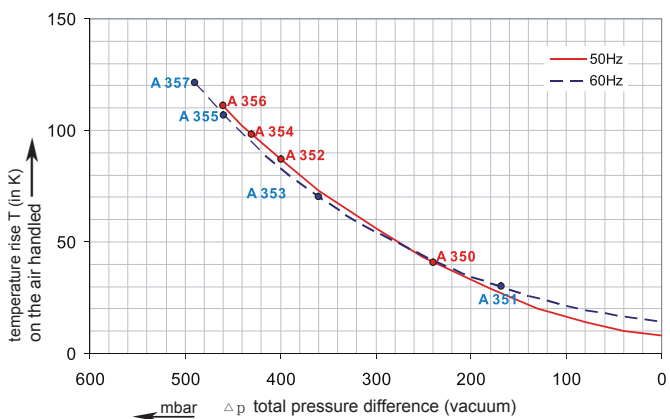
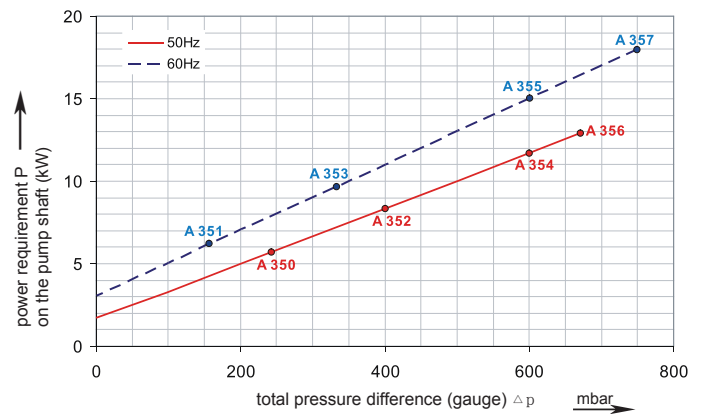
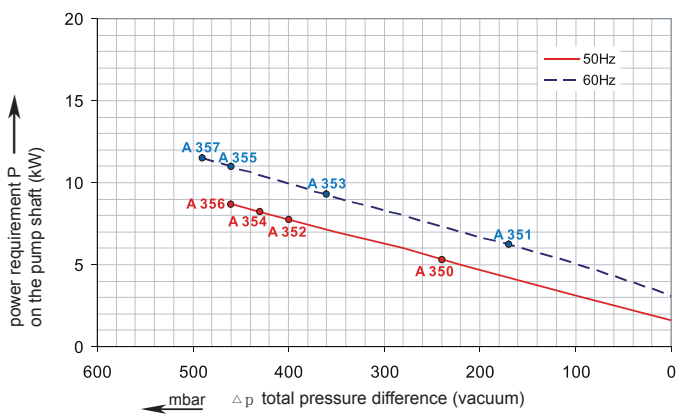
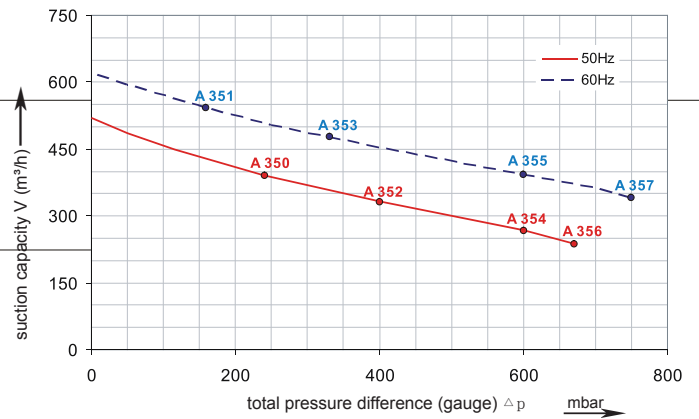
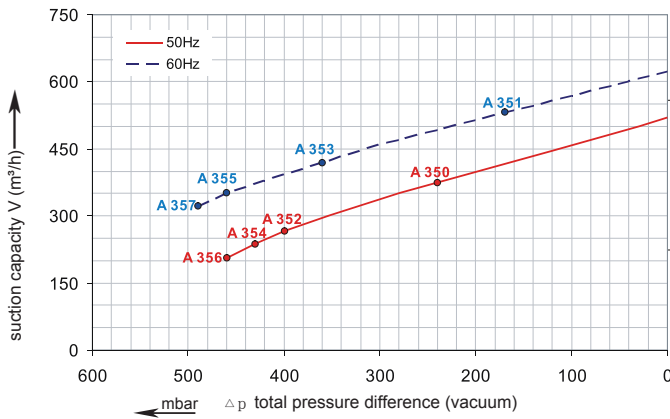
The frequency tolerance is maximum +/- 2 %.



2HB 820

Performance curve for Vacuum pump

Performance curve for Compressor



The performance curves are based on air at a temperature of 15 °C and an atmospheric pressure of 1013 mbar with a tolerance of +/- 10 %. The total pressure differences are valid for suction and ambient temperatures up to 25 °C. For other conditions please confer with us.

Each type can be applied both as vacuum pump and compressor in continuous operation over the total stated performance curve range. The motors are available as standard for the input voltage range of 50 and 60 Hz and for protection category IP 55 as well as approved for UL and CSA.