

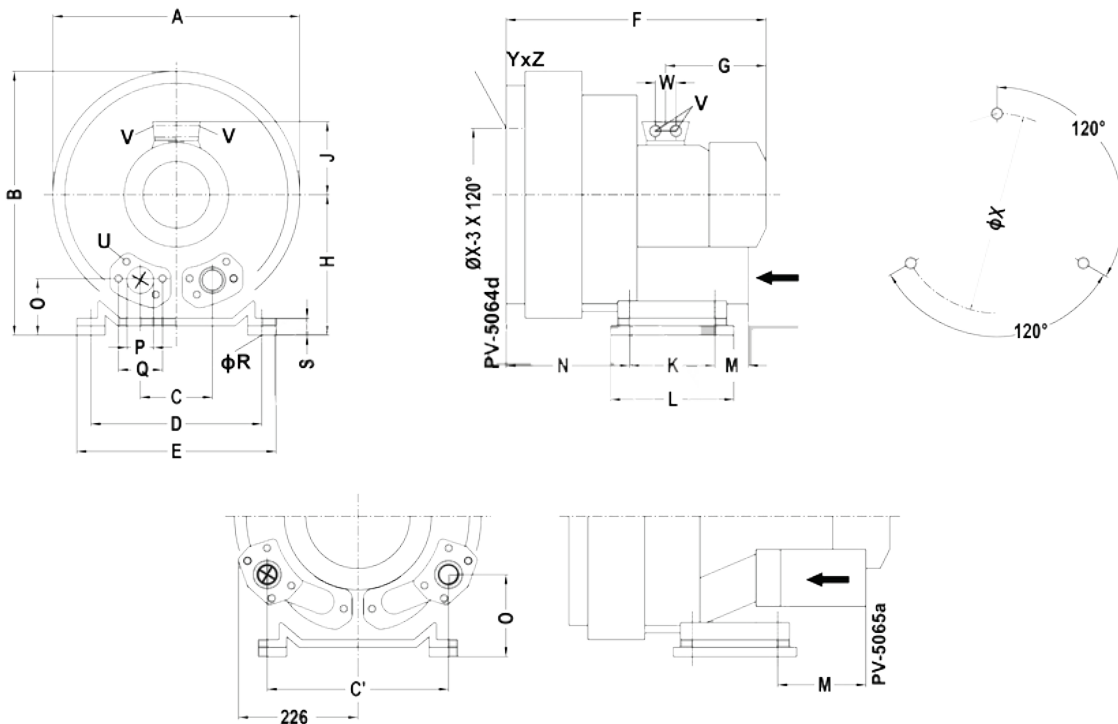
2HB 840

Selection and ordering data

Type 2HB 840

Curve No.	Type	Fre-quency Hz	Rated power kW	Input voltage V	Input current		Permissible total differential pressure ²⁾		Sound pressure level ³⁾ dB(A)	Weight ca. kg	
					A		Vacuum mbar	Compressor mbar			
3~ 50/60 Hz IP55 isolation material class F 1)											
A 370	2HB 840-750T	50	7.5	345D ... 415D	600Y...720Y	16.7D	9.6Y	-200	180	74	91
A 371	2HB 840-750T	60	8.6	380D ... 480D	660Y...720Y	17.3D	10.0Y	-150	120	78	91
A 372	2HB 840-1110T	50	11.0	345D ... 415D	600Y...720Y	28.0D	16.2Y	-280	370	74	110
A 373	2HB 840-1110T	60	12.6	380D ... 480D	660Y...720Y	29.0D	16.7Y	-310	350	78	110

Type	A	B	C	D	E	F	G	H	J	K	L	M	N	O	P	ØR	S	V	ØX	YxZ	W
2HB 840-750T	500	550	152	356	394	589	247	300	167	170	217		236	125	2½	15	66	4xM32x1.5	286	M12x20	42
2HB 840-1110T	500	550	336	356	394	694	318	300	197	170	217	312	212	165	2½	15	66	4xM32x1.5	286	M12x20	54



All blowers achieve the standards and norms of the low voltage directive (LVD)2006/95/EC, rotating electrotechnical motor EN 60034-1-2004, electromagnetic compatibility(EMC)EN55014-1/2,EN61000-2/-3/-4/-6.

- 1) For standard UL for ELECTRIC MOTOR UL 1004-1.
- 2) Relief-valve are available for limiting differential pressure.
- 3) Measuring-surface sound-pressure level acc. to DIN EN 21680, measured at a distance of 1 m. The pump is throttled to an average suction pressure, a hose is connected to the discharge side (compressor) / suction side (vacuum pump), but is not fitted with relief valves.

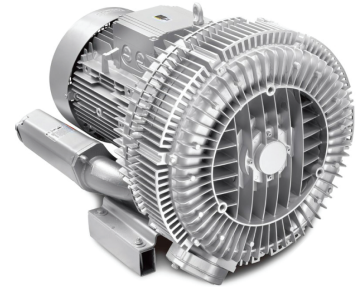
The motors are designed according to the DIN EN 60 034 / DIN IEC 34-1 and temperature class F.

For the three phase machines the tolerances are +/- 10 % for fixed voltage and +/- 5 % for voltage range.

The single phase machines are designed with a +/- 5 % tolerances. If only 90 % of the maximum allowed pressure will be used for the continuous operating then the allowed voltage range add to +/- 10 %.

For all single and three phase machines which designed according to the UL and CSA norm (UL 1004-1) the maximum allowed voltage tolerances are - 10 % resp. + 6 %.

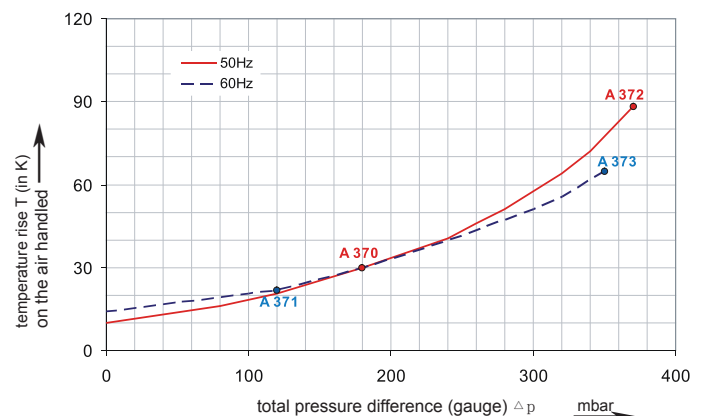
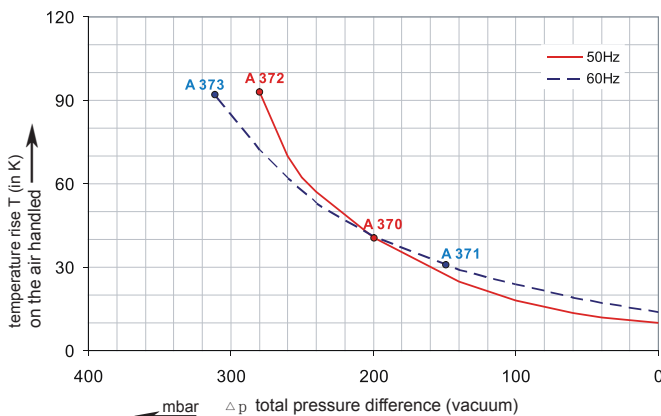
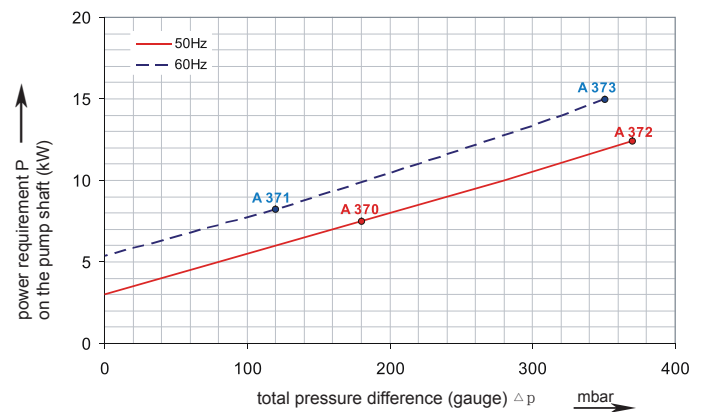
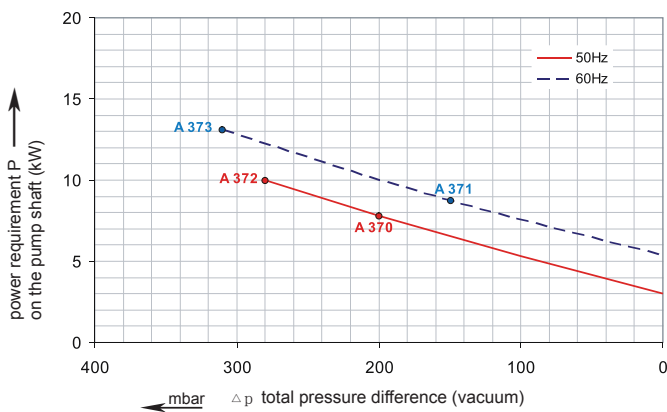
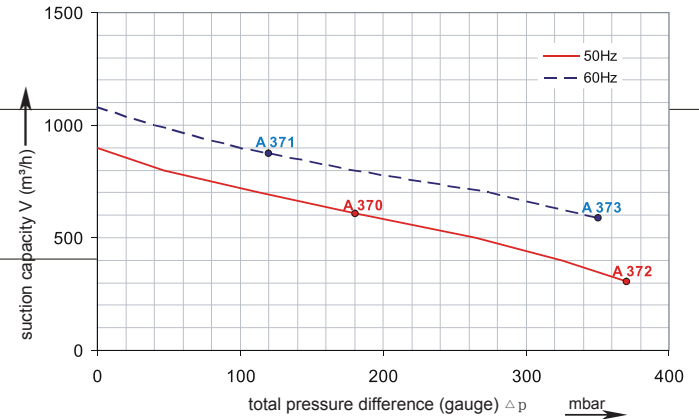
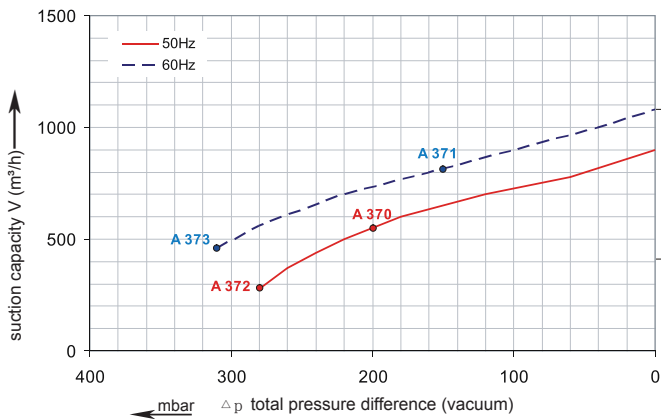
The frequency tolerance is maximum +/- 2 %.



2HB 840

Performance curve for Vacuum pump

Performance curve for Compressor



The performance curves are based on air at a temperature of 15 °C and an atmospheric pressure of 1013 mbar with a tolerance of +/- 10 %. The total pressure differences are valid for suction and ambient temperatures up to 25 °C. For other conditions please confer with us.

Each type can be applied both as vacuum pump and compressor in continuous operation over the total stated performance curve range. The motors are available as standard for the input voltage range of 50 and 60 Hz and for protection category IP 55 as well as approved for UL and CSA.