

2HB 210

Selection and ordering data

Type 2HB 210

Curve No.	Type	Fre- quency	Rated power	Input voltage	Input current	Permissible total differential pressure ²⁾		Sound pressure level ³⁾	Weight ca.
		Hz	kW	V	A	Vacuum mbar			kg

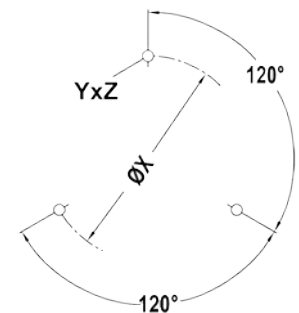
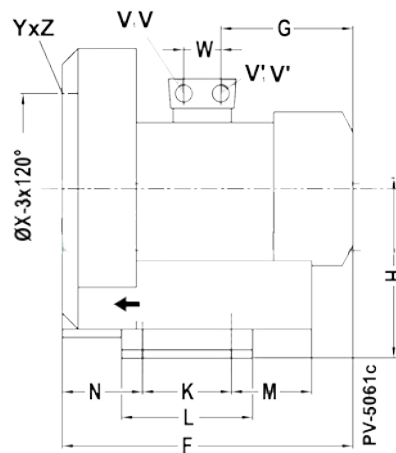
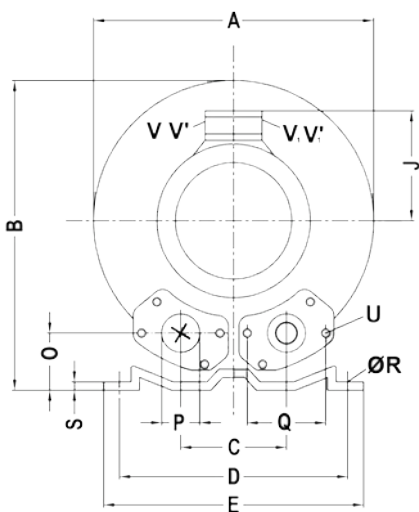
3~ 50/60 Hz IP55 insulation material class F 1)

A 130	2HB 210-025T	50	0.25	200D ... 240D	345Y...415Y	2.1D	1.2Y	-100	110	53	9
A 131	2HB 210-025T	50	0.29	220D ... 275D	380Y...480Y	2.0D	1.15Y	-110	120	56	9
A 132	2HB 210-040T	50	0.4	200D ... 240D	345Y...415Y	2.6D	1.5Y	-120	130	53	10
A 133	2HB 210-040T	60	0.5	220D ... 275D	380Y...480Y	2.6D	1.5Y	-150	160	56	10

1~ 50/60 Hz IP55 with attached condenser for continuous operation

A 132s	2HB 210-037S	50	0.37	230		2.7		-110	110	53	11
A 133s	2HB 210-037S	60	0.45	230		3.0		-130	140	56	11
A 134s	2HB 210-037S1	50	0.37	115	230	5.4	2.7	-110	110	53	11
A 135s	2HB 210-037S1	60	0.45	115	230	6.0	3.0	-130	140	56	11

Type	A	B	C	D	E	F	G	H	J	K	L	M	N	O	ØP	Q	ØR	S	U	V	V'	ØX	YxZ
2HB 210-025T	246	247	90	205	230	256	133	128	111	83	108	75	71	39	1/4	64	10	2,5	M6x17	M16x1,5	M25x1,5	140	M6x15
2HB 210-040T	246	247	90	205	230	256	135	128	111	83	108	75	71	39	1/4	64	10	2,5	M6x17	M16x1,5	M25x1,5	140	M6x15
2HB 210-037S	246	247	90	205	230	256	133	128	111	83	108	75	71	39	1/4	64	10	2,5	M6x17	M16x1,5	M25x1,5	140	M6x15
2HB 210-037S1	246	247	90	205	230	256	135	128	111	83	108	75	71	39	1/4	64	10	2,5	M6x17	M16x1,5	M25x1,5	140	M6x15



All blowers achieve the standards and norms of the low voltage directive (LVD)2006/95/EC, rotating electrotechnical motor EN 60034-1-2004, electromagnetic compatibility(EMC)EN55014-1/2,EN61000-2/-3/-4/-6.

- 1) For standard UL for ELECTRIC MOTOR UL 1004-1.
- 2) Relief-valve are available for limiting differential pressure.
- 3) Measuring-surface sound-pressure level acc. to DIN EN 21680, measured at a distance of 1 m. The pump is throttled to an average suction pressure, a hose is connected to the discharge side (compressor) / suction side (vacuum pump), but is not fitted with relief valves.

The motors are designed according to the DIN EN 60 034 / DIN IEC 34-1 and temperature class F.

For the three phase machines the tolerances are +/- 10 % for fixed voltage and +/- 5 % for voltage range.

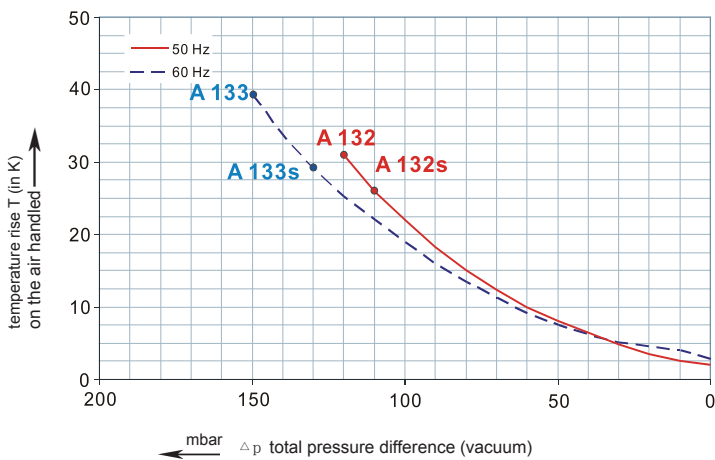
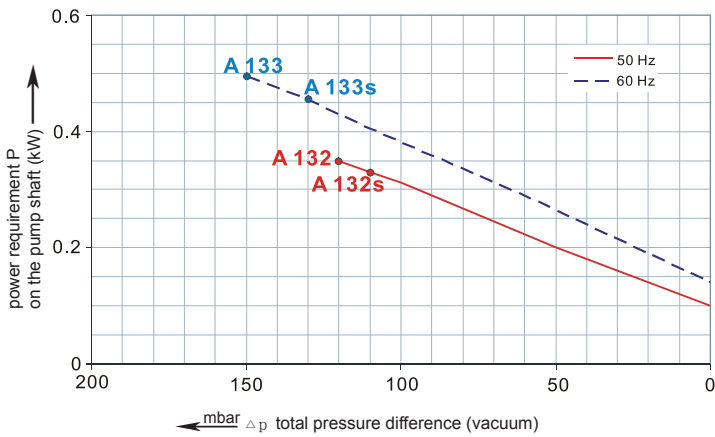
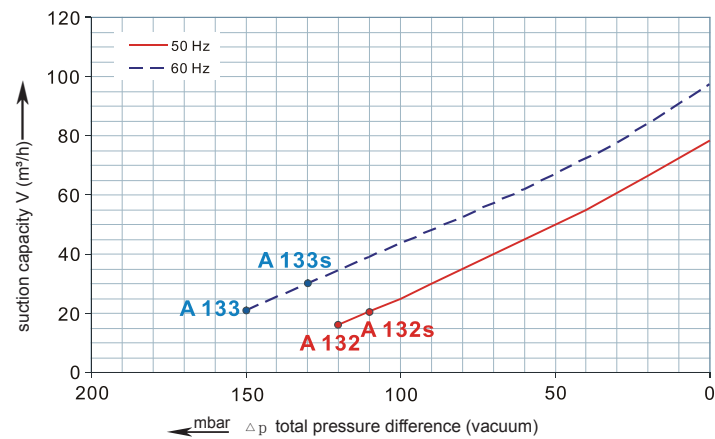
The single phase machines are designed with a +/- 5 % tolerances. If only 90 % of the maximum allowed pressure will be used for the continuous operating then the allowed voltage range add to +/- 10 %.

For all single and three phase machines which designed according to the UL and CSA norm (UL 1004-1) the maximum allowed voltage tolerances are - 10 % resp. + 6 %.

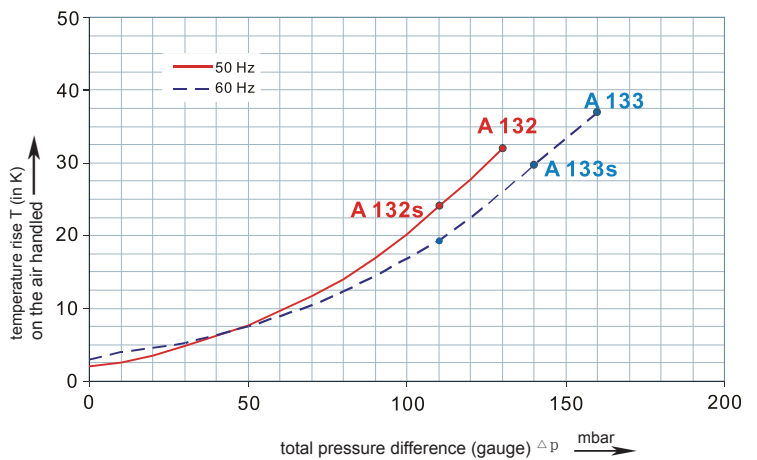
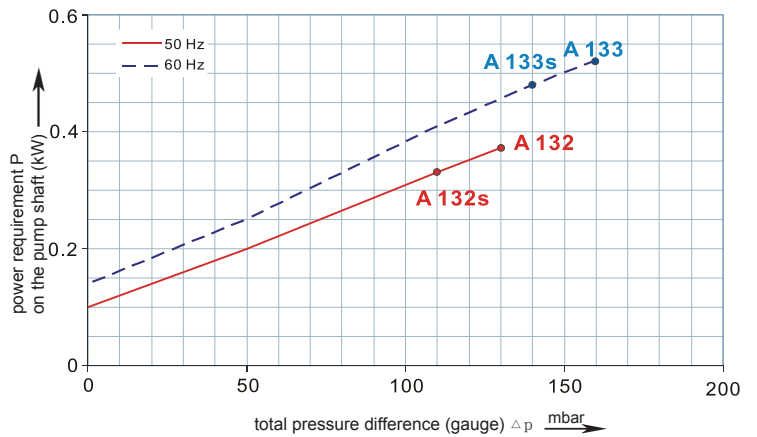
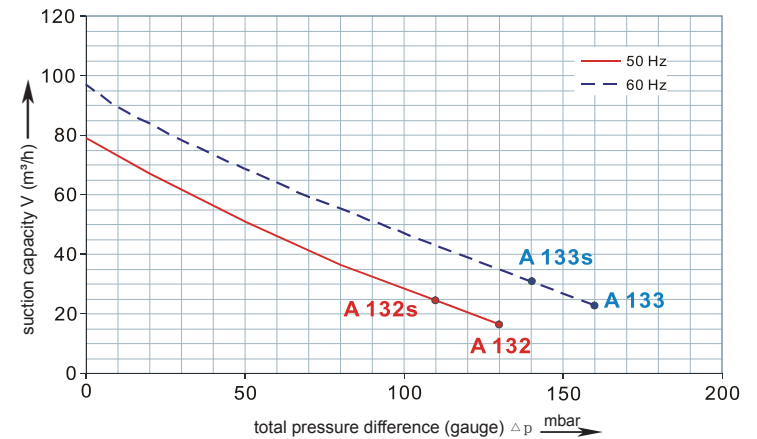
The frequency tolerance is maximum +/- 2 %.

2HB 210

Performance curve for Vacuum pump



Performance curve for Compressor



The performance curves are based on air at a temperature of 15 °C and an atmospheric pressure of 1013 mbar with a tolerance of +/- 10 %. The total pressure differences are valid for suction and ambient temperatures up to 25 °C. For other conditions please confer with us.

Each type can be applied both as vacuum pump and compressor in continuous operation over the total stated performance curve range. The motors are available as standard for the input voltage range of 50 and 60 Hz and for protection category IP 55 as well as approved for UL and CSA.