

2HB 810

Selection and ordering data

Type 2HB 810

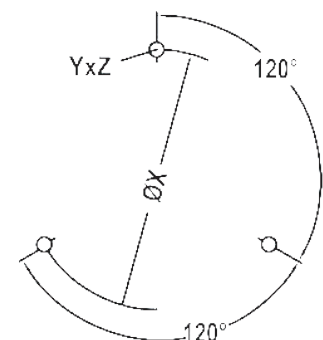
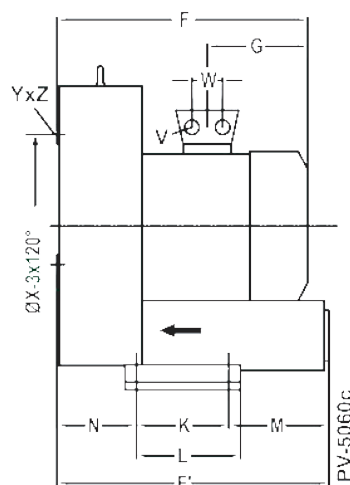
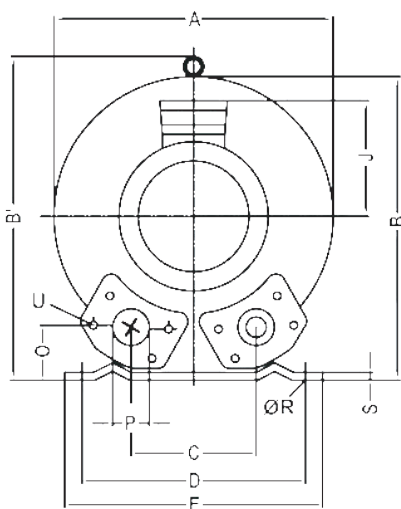
Curve No.	Type	Fre- quency	Rated power	Input voltage	Input current	Permissible total differential pressure ²⁾		Sound pressure level ³⁾	Weight ca.
		Hz	KW	V	A	Vacuum mbar			kg

3~ 50/60 Hz IP55 isolation material class F 1)

A 340	810-400T	50	4.0	345D ... 415D	600Y...720Y	9.5D	5.5Y	-200	200	70	54
A 341	810-400T	60	4.6	380D ... 480D	660Y...720Y	9.5D	5.5Y	-160	160	74	54
A 342	810-550T	50	5.5	345D ... 415D	600Y...720Y	12.9D	7.4Y	-300	300	70	63
A 343	810-550T	60	6.3	380D ... 480D	660Y...720Y	12.9D	7.45Y	-300	280	74	63
A 344	810-750T	50	7.5	345D ... 415D	600Y...720Y	16.7D	9.6Y	-320	430	70	66
A 345	810-750T	60	8.6	380D ... 480D	660Y...720Y	17.3D	10.0Y	-350	400	74	66

Measurements mm

Type	A	B	B'	C	D	E	F	F'	G	H	J	K	L	M	N	O	ØP	ØR	S	V	YxZ	ØX	W
810-400T	451	461	509	152	356	394	433	450	230	240	148	170	217	140	124	65	2½"	15	6	*M32x1	M12*20	286	42
810-550T	451	461	509	152	356	394	433	477	226	240	167	170	217	140	124	65	2½"	15	6	*M32x1	M12*20	286	42
810-750T	451	461	509	152	356	394	433	477	226	240	167	170	217	140	124	65	2½"	15	6	*M32x1	M12*20	286	42



All blowers achieve the standards and norms of the low voltage directive (LVD)2006/95/EC, rotating electrotechnical motor EN 60034-1-2004, electromagnetic compatibility(EMC)EN55014-1/2,EN61000-2/-3/-4/-6.

- 1) For standard UL for ELECTRIC MOTOR UL 1004-1.
- 2) Relief-valve are available for limiting differential pressure.
- 3) Measuring-surface sound-pressure level acc. to DIN EN 21680, measured at a distance of 1 m. The pump is throttled to an average suction pressure, a hose is connected to the discharge side (compressor) / suction side (vacuum pump), but is not fitted with relief valves.

The motors are designed according to the DIN EN 60 034 / DIN IEC 34-1 and temperature class F.

For the three phase machines the tolerances are +/- 10 % for fixed voltage and +/- 5 % for voltage range.

The single phase machines are designed with a +/- 5 % tolerances. If only 90 % of the maximum allowed pressure will be used for the continuous operating then the allowed voltage range add to +/- 10 %.

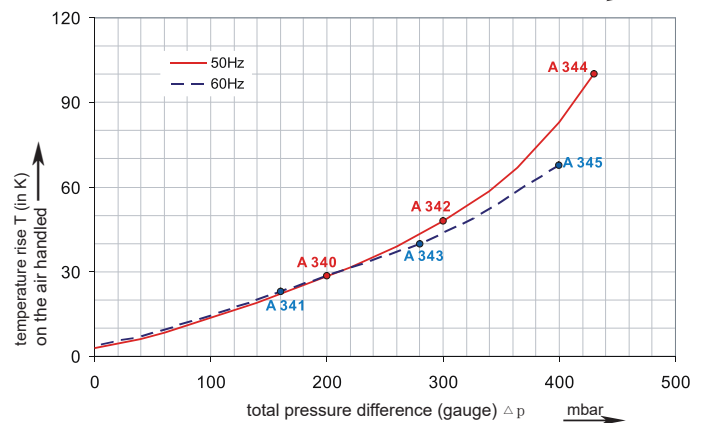
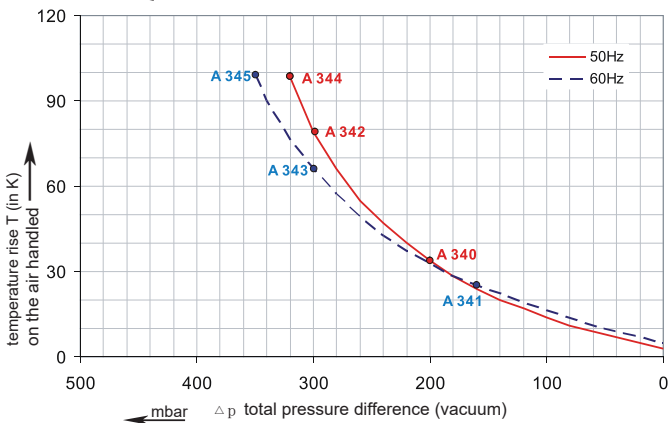
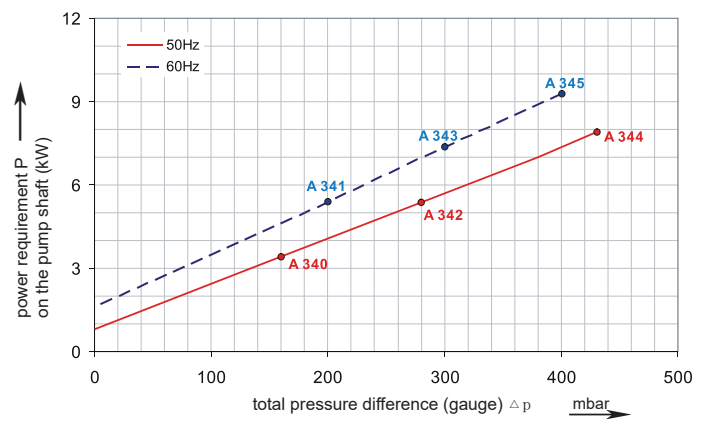
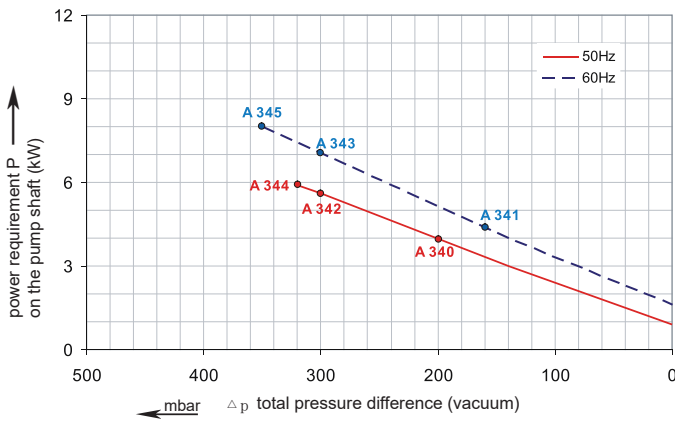
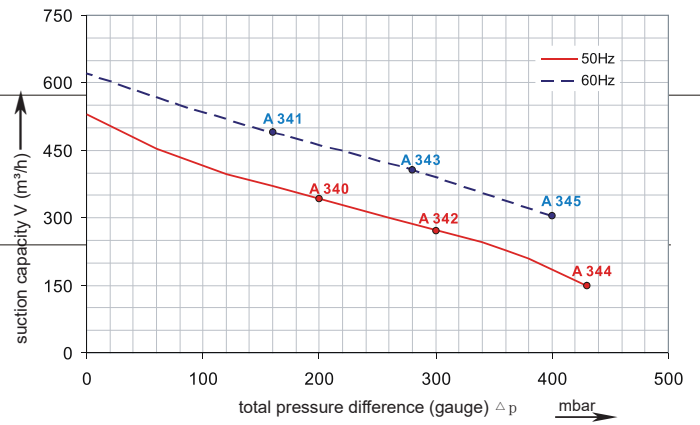
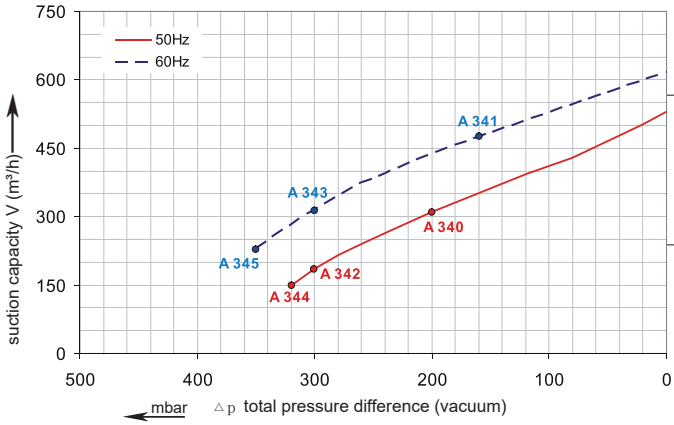
For all single and three phase machines which designed according to the UL and CSA norm (UL 1004-1) the maximum allowed voltage tolerances are - 10 % resp. + 6 %.

The frequency tolerance is maximum +/- 2 %.

2HB 810

Performance curve for Vacuum pump

Performance curve for Compressor



The performance curves are based on air at a temperature of 15 °C and an atmospheric pressure of 1013 mbar with a tolerance of +/- 10 %. The total pressure differences are valid for suction and ambient temperatures up to 25 °C. For other conditions please confer with us.

Each type can be applied both as vacuum pump and compressor in continuous operation over the total stated performance curve range. The motors are available as standard for the input voltage range of 50 and 60 Hz and for protection category IP 55 as well as approved for UL and CSA.