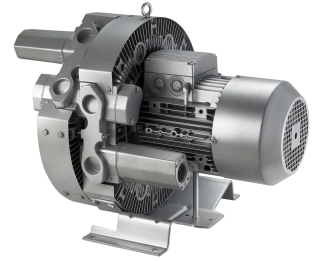
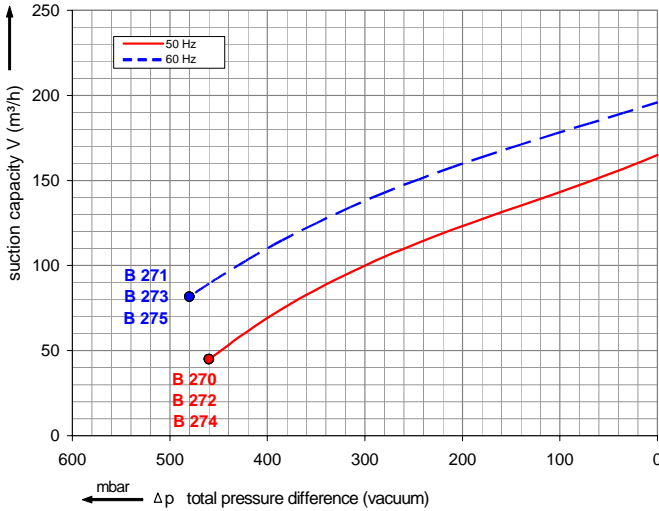


Data sheet 4HB 620

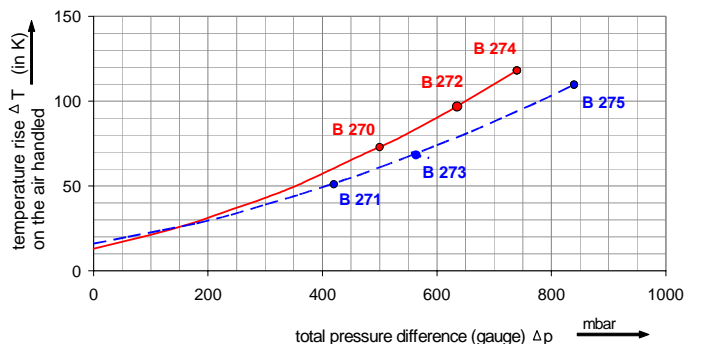
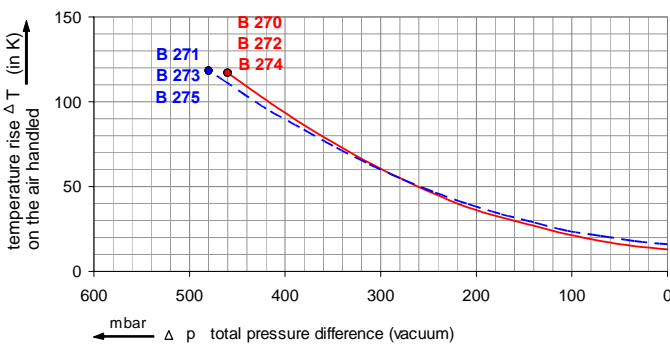
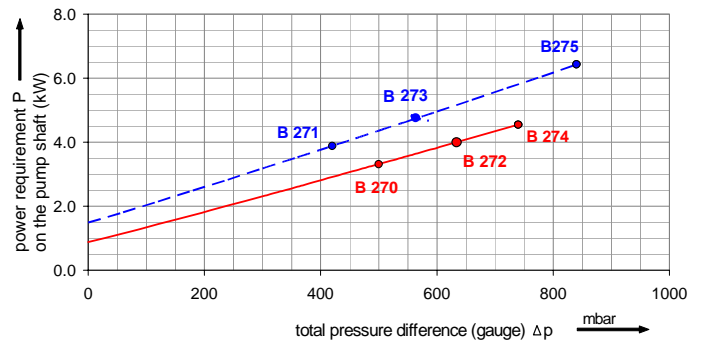
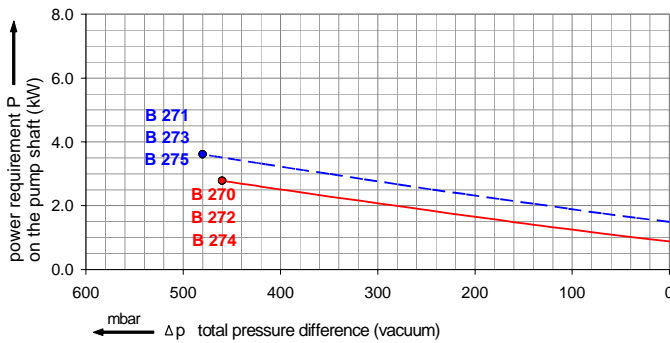
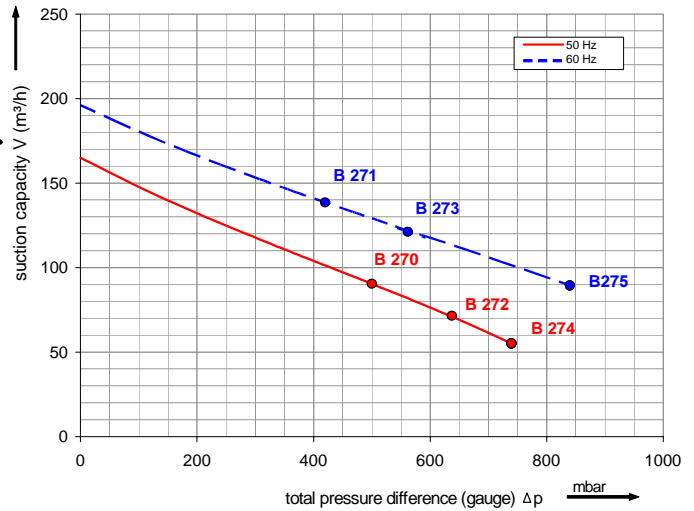
4HB



Performance curve for Vacuum pump

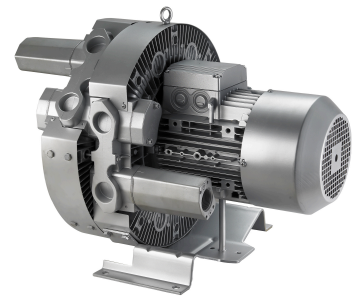


Performance curve for Compressor



The performance curves are based on air at a temperature of 15 °C and an atmospheric pressure of 1013 mbar with a tolerance of +/- 10 %. The total pressure differences are valid for suction and ambient temperatures up to 25 °C. For other conditions please confer with us.

Each 4HB type can be applied both as vacuum pump and compressor in continuous operation over the total stated performance curve range. The motors are available as standard for the input voltage range of 50 and 60 Hz and for protection category IP 55.



Data sheet 4HB 620

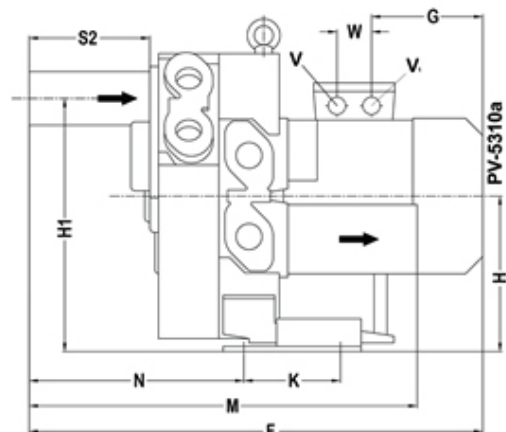
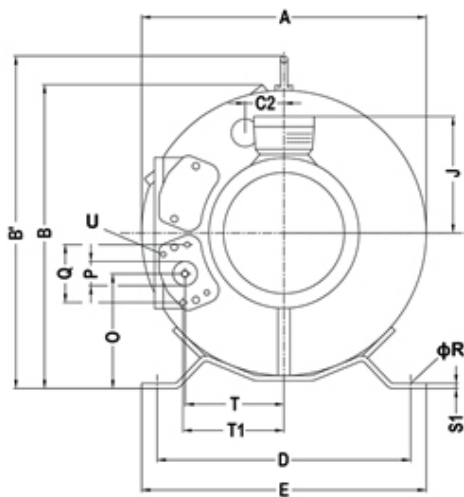
Selection and ordering data

Type 4HB 620

Curve No.	Order No.	Fre- quency Hz	Rated power kW	Input voltage V	Input current A	Permissible total differential pressure)		Sound pressure level 3) dB(A)	Weight ca. kg
						Vacuum mbar	Compressor mbar		

3~ 50/60 Hz IP55 isulation material class F)

B 270	4HB620-330T	50	3.3	200D ... 240D	345Y ... 415Y	13.0D	7.5Y	-460	500	67	48
B 271		60	3.8	220D ... 275D	380Y ... 480Y	14.2D	8.2Y	-480	420	71	48
B 272	4HB 620-400T	50	4.0	345D ... 415D		9.0D		-460	630	68	63
B 273		60	4.6	380D ... 480D		9.5D		-480	560	72	63
B 274	4HB620-570T	50	5.7	345D ... 415D		12.5D		-460	740	68	65
B 275		60	6.6	380D ... 480D		12.0D		-480	840	72	65



A	B	C''	D	E	F		
442	457	63	372	406	578		
G	H	H'	J	K	M	N	
211	236	389	128	152	458	259	
O	P	Q	ϕR	S1	S2	T	T1
173	G 1 ¼	64	14	5	140	153	155
U	V	V1	W				
M6×17	M25×1.5	M16×1.5	42				

All 4HB achieve the standards and norms of the low voltage directive (LVD)2006/95/EC, rotating electrotechnical motor EN 60034-1-2004, electromagnetic compatibility(EMC)EN55014-1/2,EN61000-2/-3/-4/-6.

- 1) For standard UL for ELECTRIC MOTOR UL 1004-1.
- 2) Relief-valve are available for limiting differential pressure.
- 3) Measuring-surface sound-pressure level acc. to DIN EN 21680, measured at a distance of 1 m. The pump is throttled to an average suction pressure, a hose is connected to the discharge side (compressor) / suction side (vacuum pump), but is not fitted with relief valves.

The motors are designed according to the DIN EN 60 034 / DIN IEC 34-1 and temperature class F.

For the three phase machines the tolerances are +/- 10 % for fixed voltage and +/- 5 % for voltage range.

The single phase machines are designed with a +/- 5 % tolerances. If only 90 % of the maximum allowed pressure will be used for the continuous operating then the allowed voltage range add to +/- 10 %.

For all single and three phase machines which designed according to the UL and CSA norm (UL 1004-1) the maximum allowed voltage tolerances are - 10 % resp. + 6 %.

The frequency tolerance is maximum +/- 2 %.